

IFTA *in* SOUTH AFRICA

International Study Tour 2024

ONWARD TRAVEL ✈️
EST 2014

ADVENTURE AWAITS...

You're registered for the International Fruit Tree Association Study Tour to South Africa! Please carefully review this document as you prepare for your travels.

TIMELINE

The deposit (\$1,000 per traveler) is now due. Please see your invoice for payment instructions. You will be sent an updated invoice when the deposit is received.

Book flights at your convenience.

April ❖ Onward Travel will send a traveler list, extension tour participants list, and confirm lodging selections.

August 1 ❖ Balance due.

Mid-September ❖ Onward Travel will send you a pre-travel survey.

Early October ❖ Onward Travel will snail mail Pre Travel Notes.

December 2–11 ❖ Study Tour!

PRE OR POST TOUR LEISURE EXTENSIONS

View tour brochures at www.IFTAtavel.com for these small group adventures. Make the most of your time in South Africa! Limited space remains. If you'd like to add a leisure extension, contact Onward Travel.



EASTERN CAPE SAFARI
december 11–14



CAPE WINELANDS IMMERSION
november 30–december 3

KRUGER SAFARI
november 27–december 2
& december 11–14



GARDEN ROUTE TOUR & EASTERN CAPE SAFARI
november 25–december 2

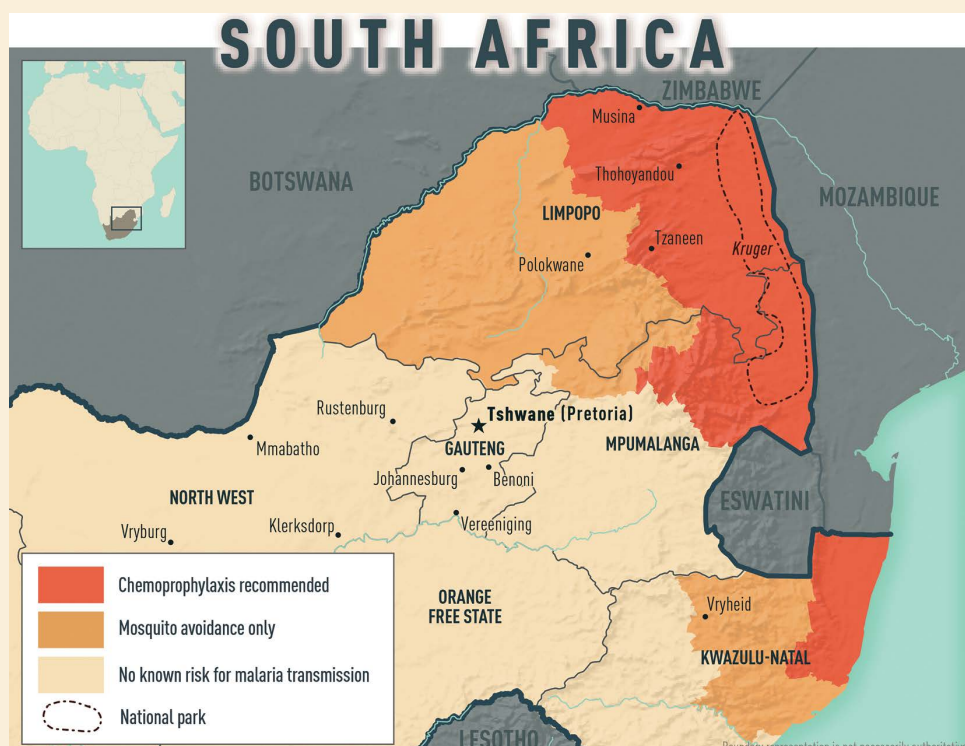
HEALTH & SAFETY INFORMATION

Onward Travel is working closely with travel experts on the ground in South Africa to ensure a safe & smooth tour for our group.

We will provide guidance to travelers regarding ground travel and common sense precautions to take to avoid any sketchy situations.

Travel.state.gov has destination information for travelers to South Africa (search "South Africa")

Traveling to Africa often necessitates vaccinations and/or anti-malarials. Talk to your doctor well in advance of travel to see if you need any vaccinations. It is recommended that travelers to the Kruger area (see map) take anti-malarials.



Get Ready to Travel

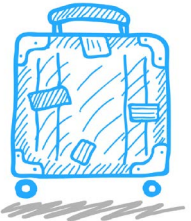


No **visa** is required for American or Canadian citizens travelling to South Africa for less than 90 days. Make sure to have two consecutive blank pages in your passport.



If you'd like to purchase **trip insurance**, we suggest Travelex. For more info, call them at 800-228-9792 or visit www.travelex.com and refer to location number 32-0704.

Find additional details and updates at www.iftatravel.com



Six to eight weeks before the tour, we **will mail you a packet** with a **packing list**, traveler directory and other useful information.

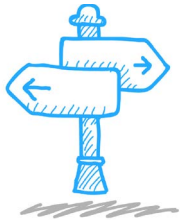


Make sure you know where your **passport** is now! For travel to South Africa it should be valid for thirty days beyond your return date.



GET IN TOUCH!

Contact Onward Travel with questions or special requests:
letsgo@onwardtravel.co
845-293-2729



South Africa Study Tour cancellation policy in a nutshell:

- \$250 of your initial deposit is nonrefundable
- Cancel within 90 days and the full deposit is nonrefundable
- Cancel within 60 days and 50% of total trip fee is nonrefundable
- Cancel within 30 days and the full trip fee is nonrefundable

See the full terms & conditions at www.onwardtravel.co/terms

flight info

If you would like assistance booking your flight, please fill out the request form at www.iftatravel.com

CHECK YOUR ITINERARY

Arrival*:

Departure:

	Study Tour December 2-11	Eastern Cape Safari December 11-14	Kruger Post-Tour Safari December 11-14
Garden Route Tour & Eastern Cape Safari November 25—December 2	Arrive Port Elizabeth Airport (PLZ) on Monday, November 25. <i>Suggested to arrive on November 24.</i> Depart Cape Town Airport (CPT) on Wednesday, December 11.	Arrive Port Elizabeth Airport (PLZ) on Monday, November 25. <i>Suggested to arrive on November 24.</i> Depart Port Elizabeth Airport (PLZ) on Saturday, December 14.	Arrive Port Elizabeth Airport (PLZ) on Monday, November 25. <i>Suggested to arrive on November 24.</i> Depart Hoedspruit Airport (HDS) on Saturday, December 14.
Kruger Safari with Thanksgiving November 27—December 2	Arrive Cape Town Airport (CPT) on Wednesday, November 27. Depart Cape Town Airport (CPT) on Wednesday, December 11.	Arrive Cape Town Airport (CPT) on Wednesday, November 27. Depart Port Elizabeth Airport (PLZ) on Saturday, December 14.	Arrive Cape Town Airport (CPT) on Wednesday, November 27. Depart Hoedspruit Airport (HDS) on Saturday, December 14.
Cape Winelands November 30—December 3	Arrive Cape Town Airport (CPT) on Saturday, November 30. Depart Cape Town Airport (CPT) on Wednesday, December 11.	Arrive Cape Town Airport (CPT) on Saturday, November 30. Depart Port Elizabeth Airport (PLZ) on Saturday, December 14.	Arrive Cape Town Airport (CPT) on Saturday, November 30. Depart Hoedspruit Airport (HDS) on Saturday, December 14.
Study Tour December 2—11	Arrive Cape Town Airport (CPT) on Monday, December 2. Depart Cape Town Airport (CPT) on Wednesday, December 11.	Arrive Cape Town Airport (CPT) on Monday, December 2. Depart Port Elizabeth Airport (PLZ) on Saturday, December 14.	Arrive Cape Town Airport (CPT) on Monday, December 2. Depart Hoedspruit Airport (HDS) on Saturday, December 14.

*please note, most itineraries depart North America two days before the traveler arrives in South Africa.